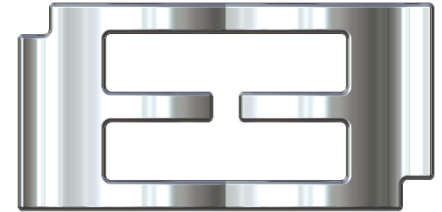


CRITICAL INFRASTRUCTURE MODULES



1 x 500 kVA UPS Module Data Sheet

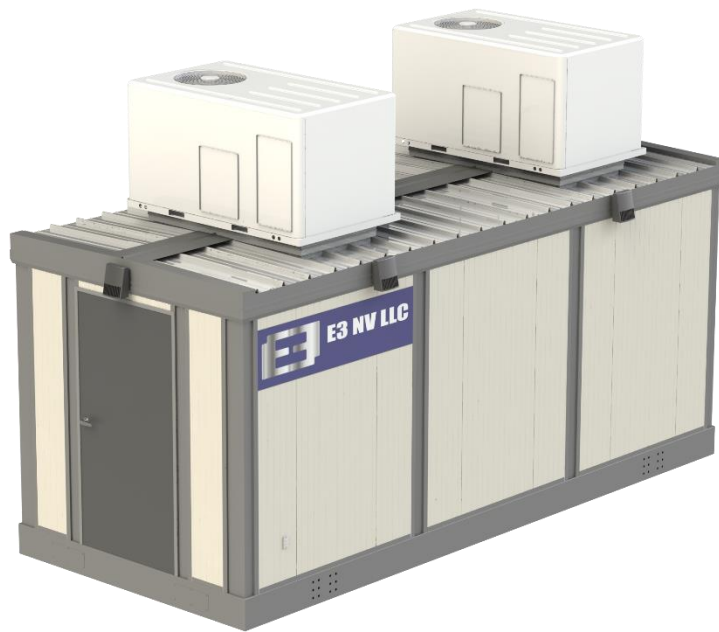
BENEFITS

- High Degree of Redundancy
- Efficient
- High-Quality
- Raised Floors
- Modular
- Scalable
- JIT Manufacturing
- Sound Investment
- Rapid Deployment
- Cost Effective
- Long Life
- Great ROI
- Customizable
- Vendor Neutral
- Supply Chain Management
- Purpose Built
- Industry Standard Components
- Designed for Low Cost Transport and Installation
- LEED, UL, IECC and other certifications available

Contact Us:
Info@e3nv.com
775-204-0300



CRITICAL
INFRASTRUCTURE
MODULES

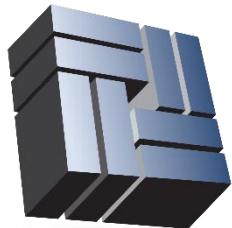


Standard Features:	Optional Features
1 x 500 kVA Toshiba UPS	N+1, N+2, 2N For Any Component
Square D Transformers	Awnings
Square D 180 volt Mechanical Panel	Vestibules
Square D Static Switches	Landings/Stairs/Ramps
GE Breaker Panels	Heating
AAON HVAC	Climate Control
RFI Computer Room Raised Flooring	FM 200 Fire Suppression
IECC, IEGC, UL Compliance	High-Strand/Super Flex Copper Wire
12ft Wide, 30ft Long, 10ft 4in Height	Overhead Cable Trays
Inexpensive to Transport; Little to No Permitting	Stationary or Mobile Units
Fully Insulated: R30 Walls and Roof	Water/Leak Detection
Cool Roof Compliance (energy savings)	Radiation Shielding*
LED Lighting	EMP Hardening*
Under Floor Ladder Rack	Ballistics Approved Panels*
Built to Miami Dade Wind & Uplift Code	Stackable Units
Fire Rated Doors	Custom Configuration

Specifications are subject to change without notice. Component availability and lead times may vary.

Purchase Price: \$342,500

Standard Unit Base Price



CRITICAL
INFRASTRUCTURE
MODULES

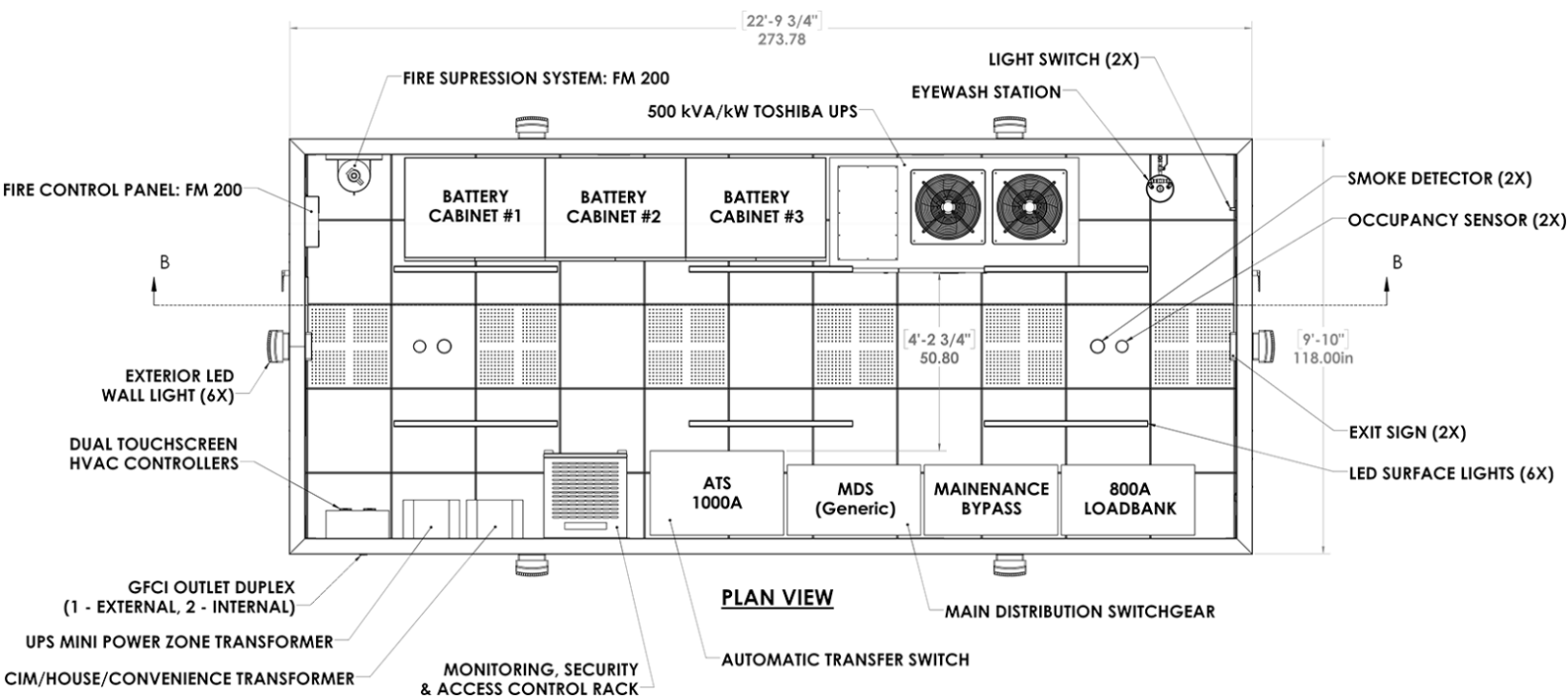
1 x 500 kVA Modular UPS Unit

Contact Us:

Info@e3nv.com

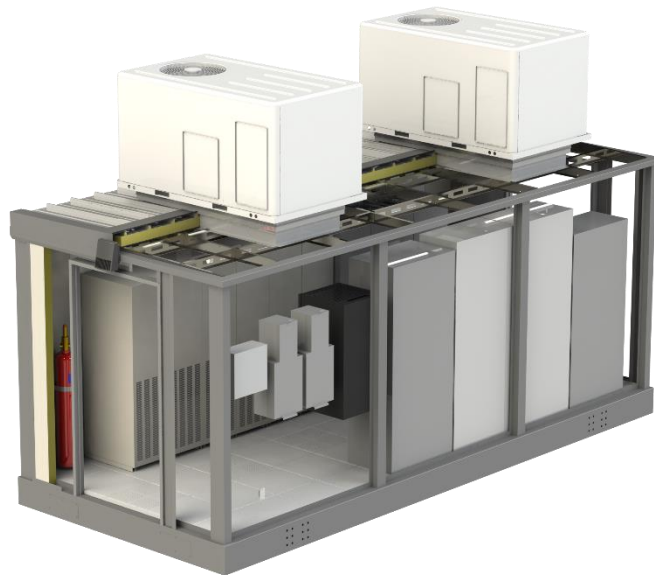
775-204-0300





Noted above is a floor plan for a single UPS CIM from a top-down perspective with equipment labeled.

Below is a cut-away of a 500 kVA unit.



Contact Us:

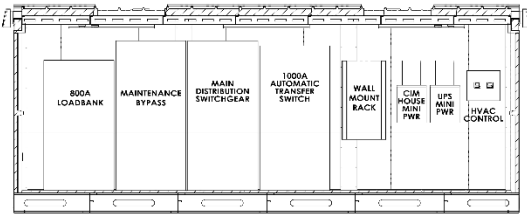
1-775-246-8111

E3 NV, LLC

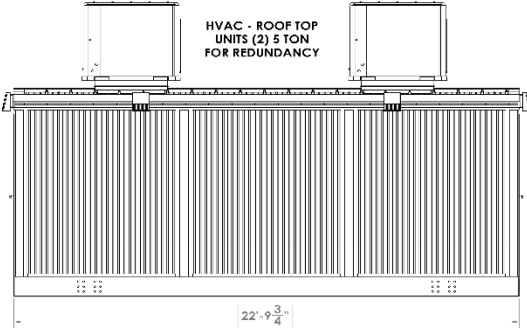
info@e3nv.com

Modules can be configured side-by-side, end-to-end or stacked. Stacked units will require a custom configuration. The cut away above has several optional features selected such as the FM 200 fire suppression system. Air conditioners do not have to be rooftop units. Please contact us for customization options.

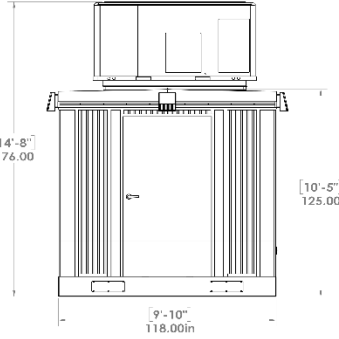
HVAC SYSTEM NOT SHOWN



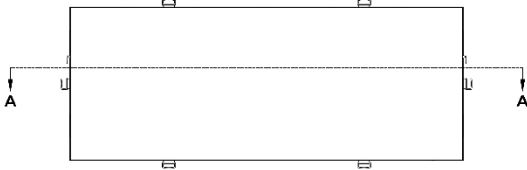
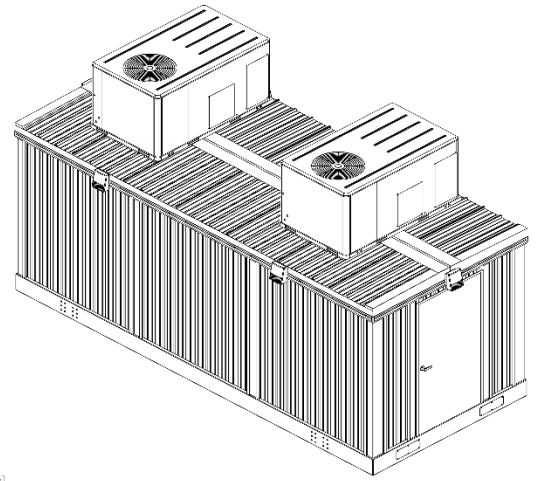
SECTION A-A



ELEVATION VIEW



ELEVATION VIEW



Our Partners:

